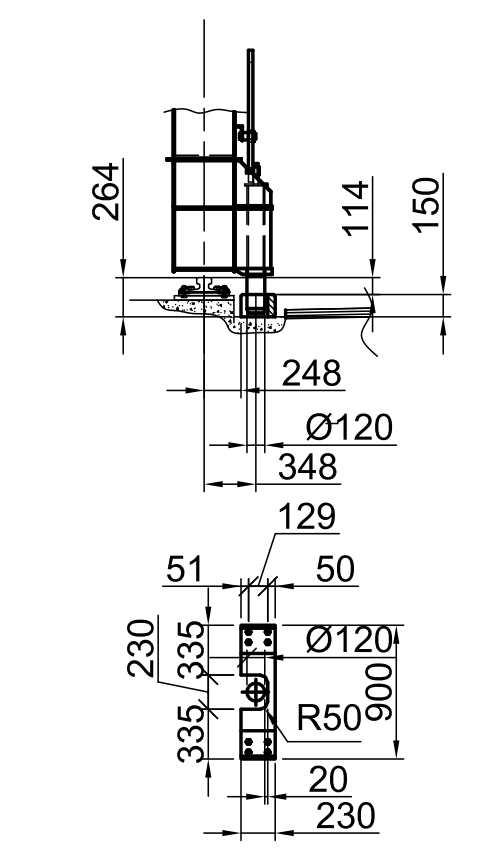


Storm brake fixing point



drive	power ( kW )
hoisting mechanism	2 x 160
slewing mechanism	7,5
cross travel	4 x 18,5
long travel	8 x 30

climate conditions	
wind speed in operation	20 m / s
wind speed out of operation	36 m / s
working temperature	-25° - 40°
Maximum relative humidity	80 %

wheel loads	kN
Vertical max	300+-10%
Horizontal max	120,09

technical data	
hoisting height	12,6 m
rope diameter	24 mm
tensile stress of wire	1960 N / mm <sup>2</sup>
sheave diameter	630 mm
trolley wheel diameter	500 mm
crane wheel diameter	710 mm
hoisting capacity - with spreader	42 t
- without spreader	55 t
aux. hoisting capacity	2 t
crane rail	A 100
trolley rail	A 75
trolley slewing angle	270°

speeds	m / min
hoisting with load	0 - 30
hoisting without load	0 - 60
cross travel	0 - 80
long travel	0 - 120
slewing	1,6 rpm

standards	
steelstructure	FEM 1.001 3rd.edition
crane group	A 7

electrical data	
crane voltage supply	3 phase/ 15 kV / 50 Hz
low voltage	3 phase/ 400 V / 50 Hz
control voltage	115/230 VAC 50 Hz / 24 VDC
Lighting voltage	230 VAC 50 Hz / 24 VDC
Maximum continuous energy consumption	630 kVA